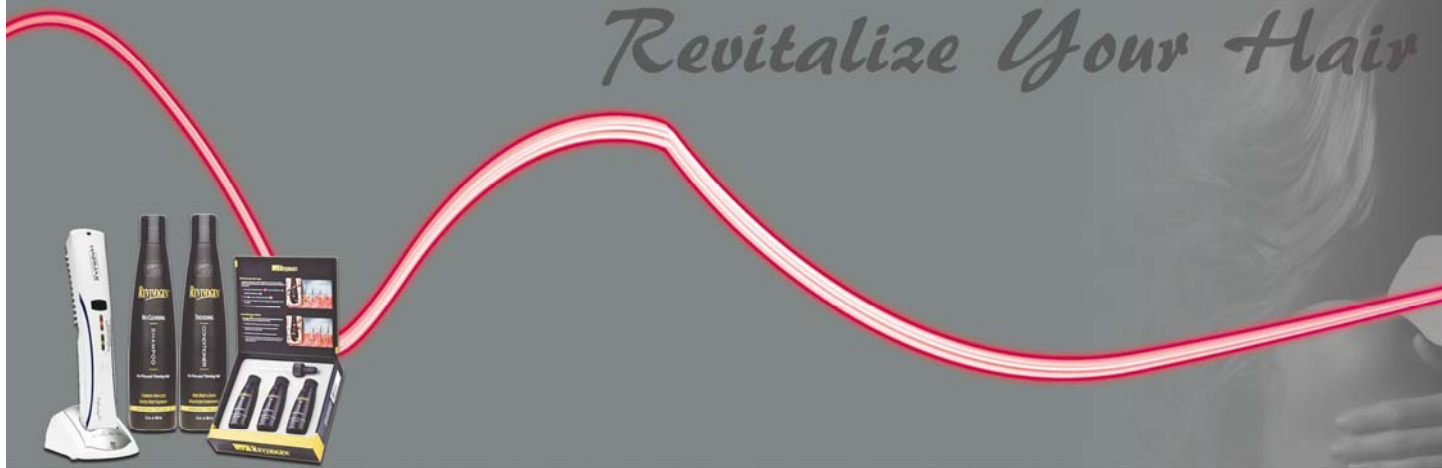


激活毛囊 帶來更豐盈髮絲

*Revitalize Your Hair*



## 療程使用說明

Treatment User Instructions



醫學增髮整合治療

| LASER REVIVOGEN THERAPY |

**LRT 醫學增髮整合治療**  
LASER REVIVOGEN THERAPY

LRT 醫學增髮整合療程 是一個強效，零副作用及非藥物的預防脫髮及毛囊再生治療。此護髮方案提供了以皮膚科醫生推薦的全效脫髮治療系統 Revivogen，及唯一獲美國食品及藥物管理局 FDA 認可的頭髮再生激光增髮技術。

Laser Revivogen Therapy - LRT is an intense rejuvenation and non-drug hair loss prevention program with no known side effect. The hair therapy regimen is made up of an advanced hair rejuvenation cleansing and conditioning system for balding and thinning hair, a dermatologist recommended hair regrowth agent (Revivogen), and the only FDA-approved home use LASER.

**建議療程**  
Treatment Protocol



**步驟 1**  
STEP 1

**活性生物洗髮露 (360ml)**

- 去除頭皮上的多餘油脂，增強預防脫髮療程效果
- 有效減少頭皮表面的 DHT

**用法：**

以清水洗濕頭髮後，將適量活性生物洗髮露搓洗頭皮，用指腹加以按摩，再讓洗髮露停留 2-3 分鐘後才以溫水沖洗乾淨。

**Revivogen Bio-Cleansing Shampoo (360ml)**

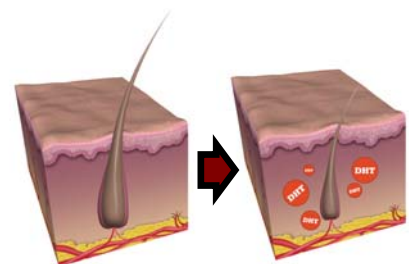
is specially formulated with the same active ingredients found in the topical formula which complements its activity. It gently cleanses and removes sebum and DHT from the scalp, helps control scalp irritation, and delivers important bioactive nutrients to create a healthy environment for hair growth.

**Directions:** Apply to wet hair. Gently massage into the scalp and work into lather. Leave in for few minutes. Rinse thoroughly with warm water.



**What is DHT?**

- > 頭髮與荷爾蒙激素的關係非常密切
- > 當雄激素二氫睪固酮(Dihydrotestosterone或簡稱DHT)進入細胞核，代謝系統產生受阻作用
- > 毛囊會萎縮，直到形成永久脫落
- > Hair loss has a close relationship with hormone
- > Hormone called DHT ( or Dihydrotestosterone) binds to Androgen Receptors of hair follicles.
- > DHT causes increased hair loss and gradual miniaturization of the hair follicle.



步驟  
STEP 2

### 髮幹修補護髮素 (360ml)

- 修補受損髮絲
- 增加頭髮光澤
- 潤澤及強化髮幹
- 特別適合幼弱髮質使用

#### 提示

洗頭後，取適量髮幹修補護髮素均勻塗抹在頭髮上，停留 2-5 分鐘，以溫水沖洗乾淨即可。

### Revivogen Thickening Conditioner (360ml)

is formulated for limp and thinning hair. It replenishes moisture, strengthens the hair shaft, and adds volume and shine, creating thicker, fuller hair.

**Directions:** Apply a small amount to wet hair after shampooing. Gently distribute through hair. For additional conditioning, leave in 2-5 minutes. Rinse thoroughly with warm water.



步驟  
STEP 3

**LRT 醫學激光增髮技術**  
Photo-BioStimulation Technology



為充電座接上電源線。

Insert the power attachment into the LRT LaserComb charging stand.



此激光增髮儀器可直接駁上電線或以內置電池運作。

The LRT LaserComb can function by either using the power cord or via battery.


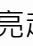

Operational: Plug the power supply into the machine.






安裝插頭於電源插座。

Plug power supply into the electrical socket.



按住電源按鈕 POWER BOTTON (  ) 2 - 3秒。電源按鈕的綠色指示燈會亮起。再按激光按鈕 LASER BUTTON (  )。當紅色指示號亮起即表示激光功能已可運作。使用完後再按住電源按鈕 POWER BOTTON (  ) 2 - 3秒關機。

Press and hold the POWER BUTTON (  ) down for 2-3 seconds to turn on the device. The GREEN BATTERY INDICATOR will light up. Next, press the LASER BUTTON (  ), The RED BATTERY INDICATOR will light up which means the laser is functioning. When finished, press and hold the POWER BUTTON (  ) down again for 2-3 seconds to turn off the device.



把激光增髮儀平放於頭皮表面，以確保兩排齒輪可接觸頭皮表面。

Place the device flat on your scalp making sure that both rows of teeth are touching the scalp.



由髮線開始慢慢地移動激光增髮儀，當你聽到嗶嗶聲及感覺振動提示後，以頭髮逆向生長方向每隔1 / 2英寸（1厘米）距離，於頭皮表面略為停頓才繼續移動激光增髮儀。

Start at your hairline. Move the laser machine slowly (in combing motion) by placing the device on a spot and leaving it there for 4 seconds. Once you hear the beep (The device features an audible beep tone every 4 seconds which can aid you in timing the movements), move the device about 1/2 inch (1cm) to the next spot without lifting the device off your head.



請以前向後及右向左方式重複移動。在一般情況下，你可於8或15分鐘內完成一次激光增髮療程。

Make a few complete passes over your scalp. For the first pass move the device against the direction of the hair growth – front to back. And side to side on the second pass. Repeat these passes within the recommended 8 or 15 minutes sessions.



長頭髮使用者可用普通梳子抬起長頭髮，激光射線必須直接照射頭皮表面才可產生激髮增髮作用。

If you have long hair, use an ordinary comb or your hand to lift the long hair out of the way allowing the LaserComb to delivery the laser light to the scalp.

注意：LRT 激光增髮儀是由複雜的電子設備裝置組成，以確保最佳的性能和適當的激光治療。如果激光射線不能關閉或未能成功開啓，這將表示需要重置設備。請用清潔布或小毛巾包裹激光窗口。用文件夾按位於增髮儀底部的激光重置鍵（Reset Key）。

The laser machine is built with complex electronics to ensure optimum performance and proper delivery of laser treatments. If for some reason the device will not turn off, it will be necessary to reset the device. Cover the laser window with a wash cloth or a small towel. Using a paper clip, press the RESET KEY located on the underside of the device

**步驟 4**  
STEP 4

**全效毛囊治療套裝 (3個月用量)**

- 純天然成份有效阻止 DHT 的產生
- 有效阻隔 DHT 附著毛囊
- 重新啟動頭髮正常生長週期，改善脫髮問題

**Revivogen Scalp Therapy (3 months supply)**

is the most important part of the Revivogen system and must be used daily in order to get good results.

1. Natural DHT Inhibitors block Type 1 and Type 2 forms of 5-Alpha Reductase enzyme and reduce DHT production.
2. Natural DHT Blockers shield the Androgen Receptors and prevent DHT attachment and uptake by the follicle.
3. Activates and maintains the hair follicle growth phase, thereby reducing hair loss.



**1.**

將頭髮梳向後。  
Comb hair back



**2.**

根據治療範圍，抽取 1-2 毫升全效毛囊治療精華塗抹頭皮表面。

Depending on the size of the affected area using 1-2 ml of Revivogen Scalp Therapy to lightly cover the area.



**3.**

以滴管分隔頭髮，把全效治療精華輕輕滴在頭皮上，將需要治療部位都均勻塗抹。

Part hair with dropper and drag across the scalp, lightly dripping the formula. Continue this process in small sections until all affected area are covered.



**4.**

請以指頭按摩頭皮約 30 秒。使用後 3 小時內切勿沖洗，你亦可於第 2 天才沖洗。

If the scalp therapy starts to run, massage into scalp. Leave on scalp for 3 hours or leave on overnight.





## 療程使用說明

Treatment User Instructions

關於脫髮及頭皮分析問題，請向你的醫生或治療師查詢。

Regarding to hair loss and scalp problems , please consult your doctor or therapist for details.